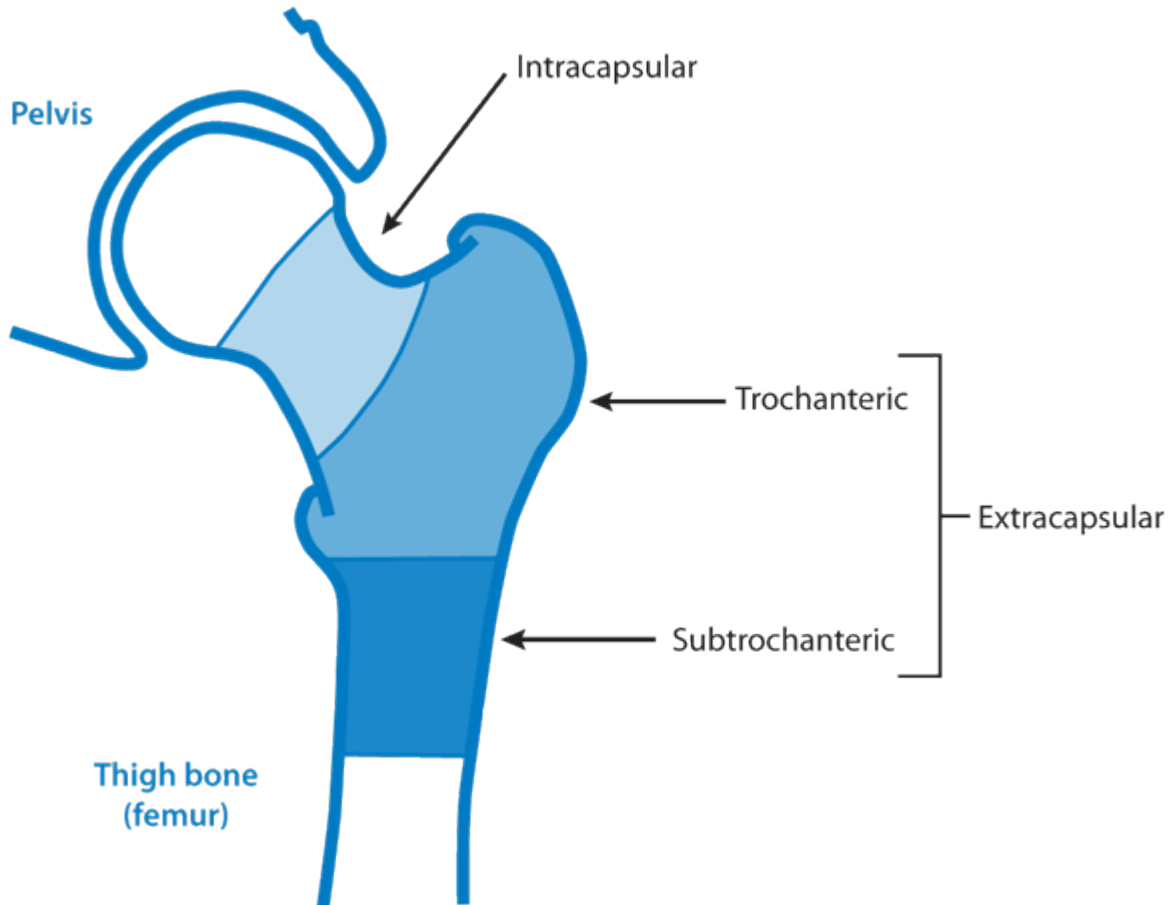


What is a Neck of Femur Fracture?

A fracture is a break in the continuity of the bone usually as a result of four main causes: a single traumatic incident (**fall**), stress fracture (**overuse injury**), fragility fracture (**age related/osteoporosis**) or pathological (**cancer**) fracture.

A fractured neck of femur (commonly abbreviated to # NOF) is a fracture near the top end of the femur or neck of the femur close to the hip joint.



Hip fractures are the most common serious injury in older people. It is also the most common reason for older people to need emergency anaesthesia and surgery, and the commonest cause of death following an accident. Patients may remain in hospital for a number of weeks, leading to one and a half million hospital bed days being used each year.

A hip fracture is associated with a total cost to health and social services of over £1 billion per year. This one injury carries a total cost equivalent of approximately 1% of the whole NHS budget.

Useful Websites:

National Hip Fracture Database (<https://www.nhfd.co.uk/files/2018ReportFiles/NHFD-2018-Annual-Report-v101.pdf>)

NICE Hip Fracture Management (<https://www.nice.org.uk/Guidance/CG124>)

Surgical Interventions for a Neck of Femur Fracture

The vast majority of neck of femur fractures are repaired by surgical intervention and the types of surgery differ depending on the type of fracture.

Intracapsular Fracture

A low grade intracapsular fracture has a good chance of healing and is usually repaired with a **Dynamic Hip Screw (DHS)** or a **Cannulated Hip Screw**, which is the fixation of the fracture using screws.

Depending on the severity of the fracture and if the head of femur is displaced, the fracture may be repaired with a **Hemiarthroplasty** (also called Thompsons) which is the removal and replacement of the head of femur and affected bone.



Hemiarthroplasty



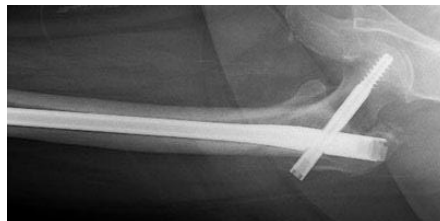
Dynamic Hip Screw



Total Hip Replacement

Subtrochanteric Fracture

This type of fracture is often repaired using an **intramedullary (IM) nail** in which a metal rod is inserted into the bone's central cavity.



IM Nail

Trochanteric Fracture

This type of fracture is usually treated conservatively, meaning that there is no surgical intervention required.

